

# VIEW FROM THE TOP

## WI Utility Round Table

Jeff Keebler, Madison Gas & Electric

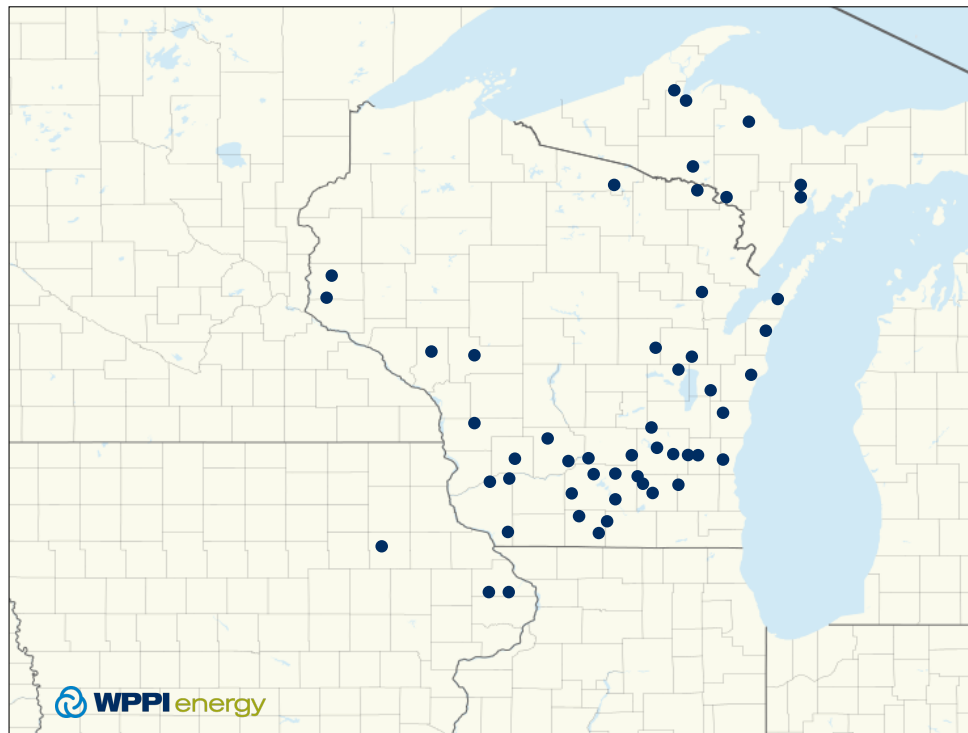
Dan Krueger, WEC Energy Group

Mike Peters, WPPI Energy

Moderated by Tyler Huebner, RENEW Wisconsin



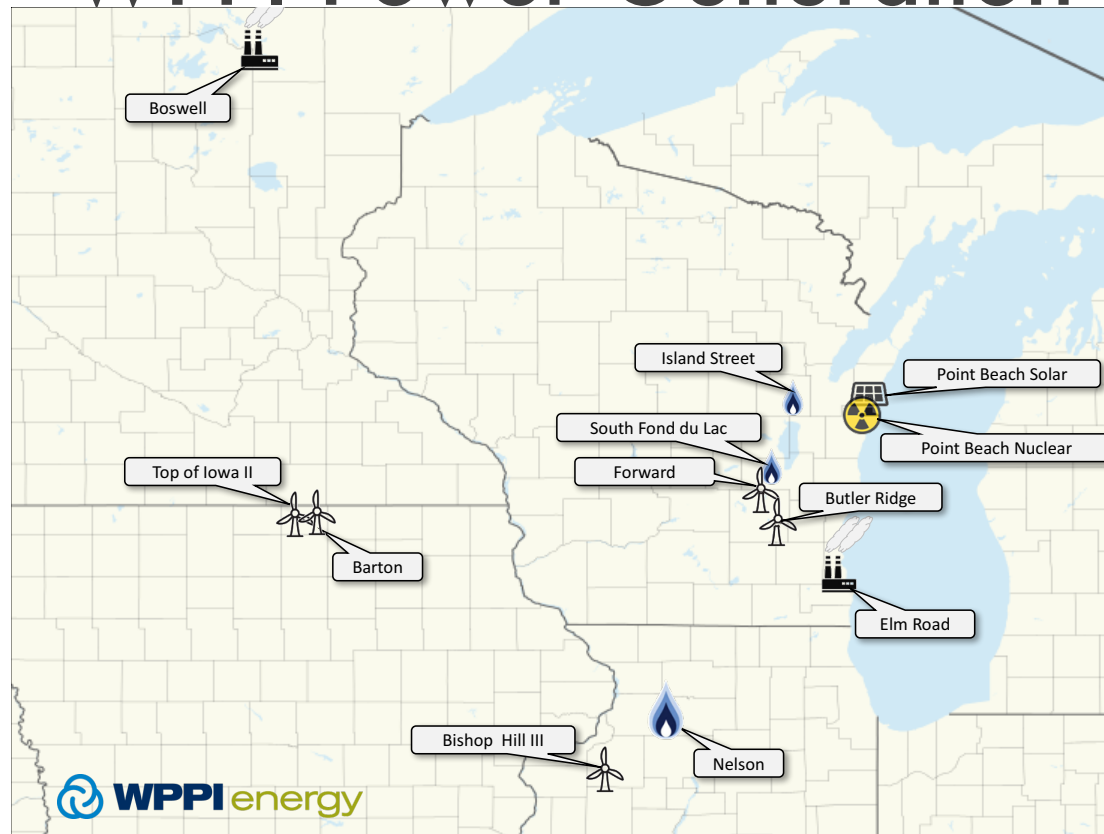
# WPPI Member Communities



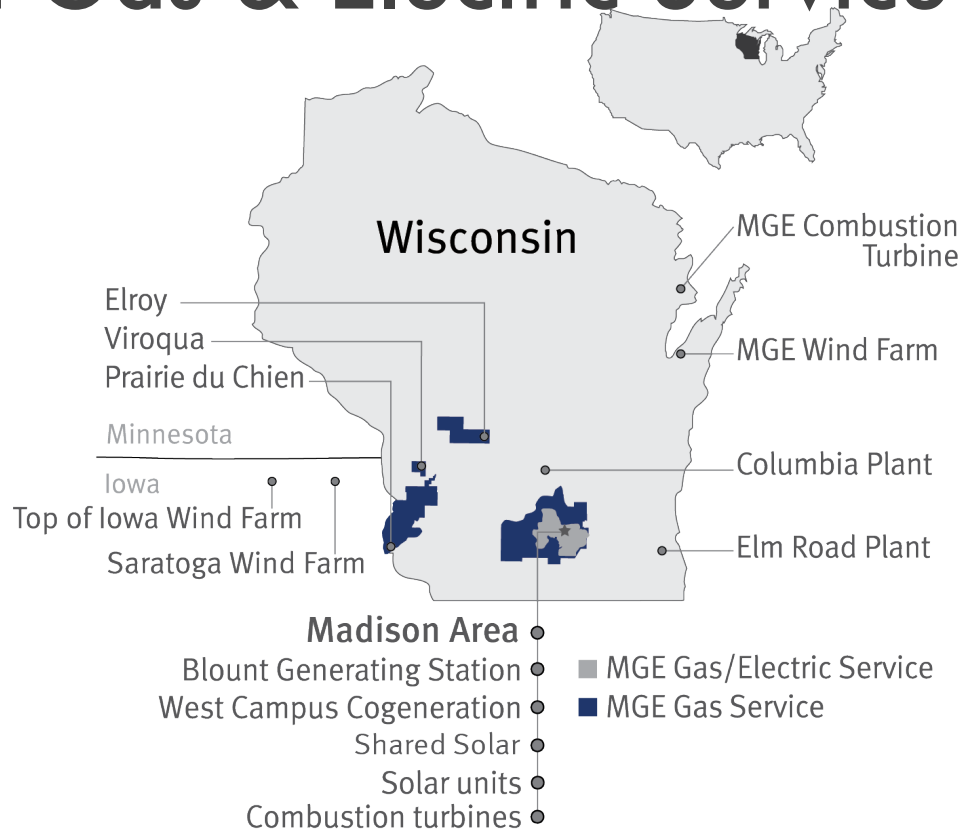
PRESENTED BY



# WPPI Power Generation



# Madison Gas & Electric Service Territory



PRESENTED BY



# MGE Energy 2030 Framework



**Greater use of renewable resources**  
30% renewable energy by 2030  
with 25% by 2025



**Energy efficiency and conservation**  
Continued work with customers  
to reduce overall and peak energy use  
—as well as costs—  
for customers



**Innovative products and services**  
To offer customers more control and value



**More advanced electric grid**  
To support and integrate new technology while ensuring reliability



**Reduced carbon dioxide emissions**  
40% reduction by 2030  
from 2005 levels



**Deepen customer engagement**  
To help guide our efforts as we advance Energy 2030



# CLEAN ENERGY INITIATIVES

## Saratoga Wind Farm

- Estimated capital cost of \$107 million.
- 66-megawatts, consisting of 33 turbines.
- MGE's largest wind farm to date.
- Expected online January 2019.



PRESENTED  
BY



# CLEAN ENERGY INITIATIVES

## Shared Solar

- A 500-kilowatt (kW) solar array on the City of Middleton's Operations Center.
- Began generating January 2017.
- Waiting list of customers developed for possible future projects.
- MGE partnered with the City of Middleton for an additional 100-kW solar array at the police department.



PRESENTED  
BY



## Company Statistics

**\$21.0** billion market cap <sup>(1)</sup>

**1.6** million electric customers

**2.8** million natural gas customers

**60%** ownership of American Transmission Company

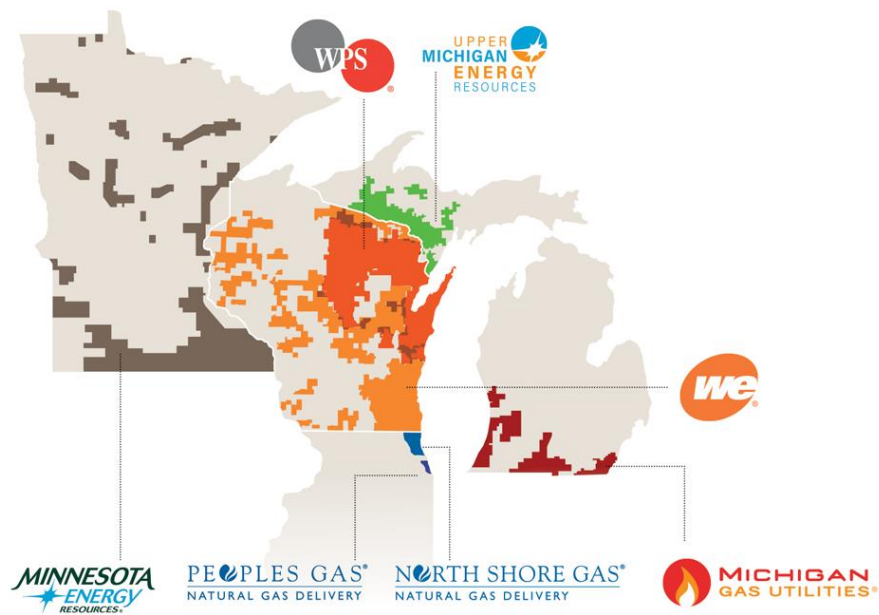
**69,000** miles of electric distribution

**46,000** miles of gas distribution

**\$17.7** billion of rate base <sup>(2)</sup>

**99+%** regulated <sup>(3)</sup>

- (1) As of 12/31/17
- (2) 2016 average rate base
- (3) Based on earnings from operations



**WEC**  
Energy Group



PRESENTED BY  
**NEXtera**  
ENERGY  
RESOURCES



## Investing in Zero-Carbon Generation

350+ MW of zero-carbon generation in Wisconsin by 2020

Solar generation technology has greatly improved, become more cost-effective and complements our summer demand curve.



- Solar
  - 350MW purchase from developer
  - Qualifies for Investment Tax Credit (ITC)
- Battery storage
  - Option to add as part of solar developments
  - Must be cost effective
  - Qualifies for Investment Tax Credit (ITC)
- Additional projects being actively developed



PRESENTED  
BY



# VIEW FROM THE TOP

## WI Utility Round Table

Jeff Keebler, Madison Gas & Electric

Dan Krueger, WEC Energy Group

Mike Peters, WPPI Energy

Moderated by Tyler Huebner, RENEW Wisconsin



# CLEAN ENERGY INITIATIVES

## Renewable Energy Rider

- Provides MGE another tool to meet the needs of our customers.
- Allows MGE to tailor a renewable energy solution for commercial customers.
- State regulators recognize our customers are demanding renewable generating options.



PRESENTED BY



# VIEW FROM THE TOP

## WI Utility Round Table

Jeff Keebler, Madison Gas & Electric

Dan Krueger, WEC Energy Group

Mike Peters, WPPI Energy

Moderated by Tyler Huebner, RENEW Wisconsin

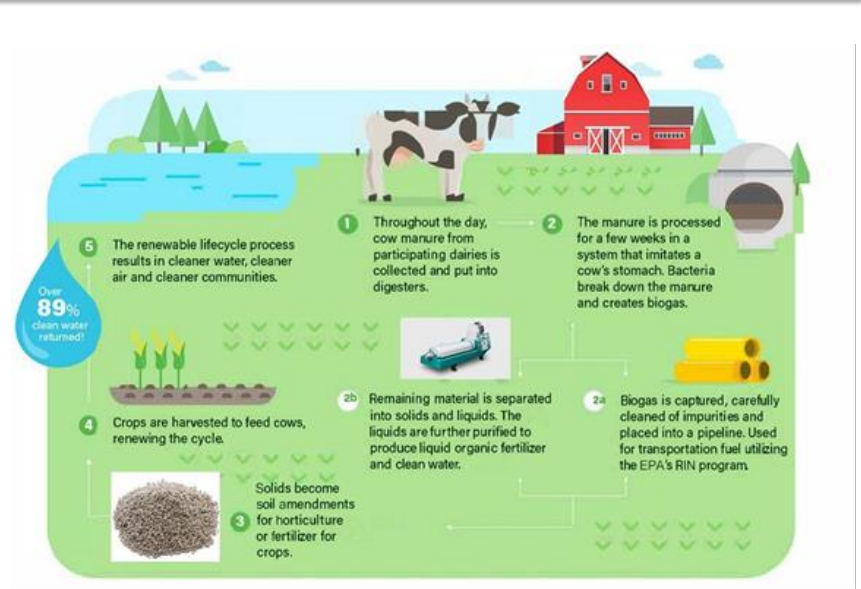


# Green Pastures Bio Energy Center

Brown County WI -- Targeted Operational 2019

## Water Quality Benefits:

- 200M gallons of manure land application eliminated
- 500,000+ lbs. phosphorous removed from watershed



PRESENTED BY



# VIEW FROM THE TOP

## WI Utility Round Table

Jeff Keebler, Madison Gas & Electric

Dan Krueger, WEC Energy Group

Mike Peters, WPPI Energy

Moderated by Tyler Huebner, RENEW Wisconsin



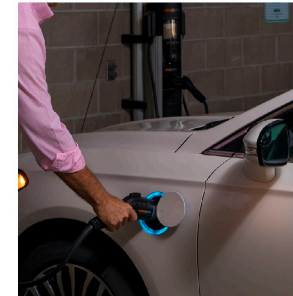
# ELECTRIC VEHICLE (EV) INITIATIVES

## MGE's Public Charging Network

- 29 public charging stations for EVs.
- Powered on 100% renewable energy.

## Charge@Home Pilot Program

- Program makes EV home charging faster, more convenient.



## Partnership with City of Madison on Electric Buses

## EV Discounts

## Workplace and Multifamily Charging



# VIEW FROM THE TOP

## WI Utility Round Table

Jeff Keebler, Madison Gas & Electric

Dan Krueger, WEC Energy Group

Mike Peters, WPPI Energy

Moderated by Tyler Huebner, RENEW Wisconsin

