



2026 RENEW WISCONSIN SUMMIT

Resilience by Design: Building Strength and Stability

THURSDAY, FEBRUARY 5, 2026 • MADISON, WI

SPONSORSHIP



THURSDAY, FEBRUARY 5, 2026

15TH ANNUAL RENEW WISCONSIN ENERGY SUMMIT



RENEW Wisconsin's Energy Summit returns to the Monona Terrace in Madison on February 5, 2026. The Summit brings together more than 700 attendees, 100 sponsors, and 50 exhibitors each year, making it the state's premier gathering for advancing clean energy. It is where people across the industry, from policymakers to local advocates, come together to share ideas and move Wisconsin forward.

Our theme this year, Resilience by Design: Building Strength and Stability, speaks to the heart of what makes clean energy work possible. It reflects people and organizations willing to invest in long-term solutions and community strength. Sponsorship is a way to demonstrate your commitment to that vision while connecting with leaders and partners shaping Wisconsin's energy future.

Your support makes this event possible and keeps the clean energy community strong. By sponsoring, you help create the space where collaboration happens, relationships grow, and momentum builds for the years ahead.



ABOUT RENEW

RENEW Wisconsin is a nonprofit organization promoting renewable energy in Wisconsin. We work on policies and programs that expand solar power, wind power, biogas, local hydropower, geothermal energy, battery storage, beneficial electrification and electric vehicles. Since 1991 we have been a champion for clean energy solutions in the Badger State. Our staff brings a diverse set of passions and skills to fulfill our shared vision of renewable energy powering a prosperous Wisconsin.

CONTACT

214 North Hamilton Street, Suite 300

Madison, WI 53703

608.255.4044

ismaeel@renewwisconsin.org

www.renewwisconsin.org/renewable-energy-summit

SUMMIT HIGHLIGHTS

The RENEW Wisconsin Energy Summit attracts professionals from across the country eager to discuss Wisconsin's renewable energy future. Clean energy leaders who have provided keynote addresses at previous Summits include:



Erica Mackie
Grid Alternatives



Tonya Hicks
Power Solutions



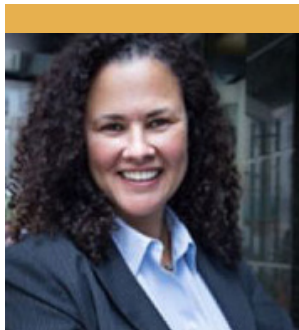
Robert Blake
Solar Bear



Michelle Moore
Groundswell



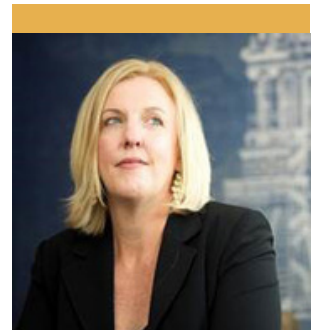
Kari Lydersen
Journalist / Author



Kelly Speakes-Backman
U.S. Dept. of Energy



Sandra Henry
Elevate Energy



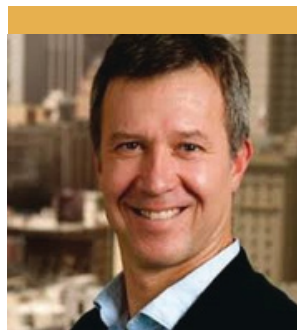
Abigail Ross Hopper
Solar Energy Industries
Association



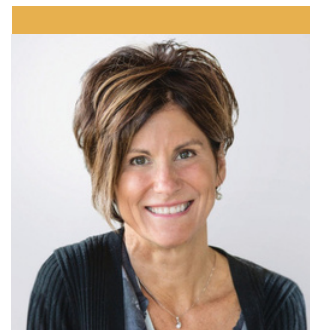
Tyler Huebner
Former PSCW
Commissioner



Katherine Hamilton
38 North Solutions



Adam Browning
Vote Solar

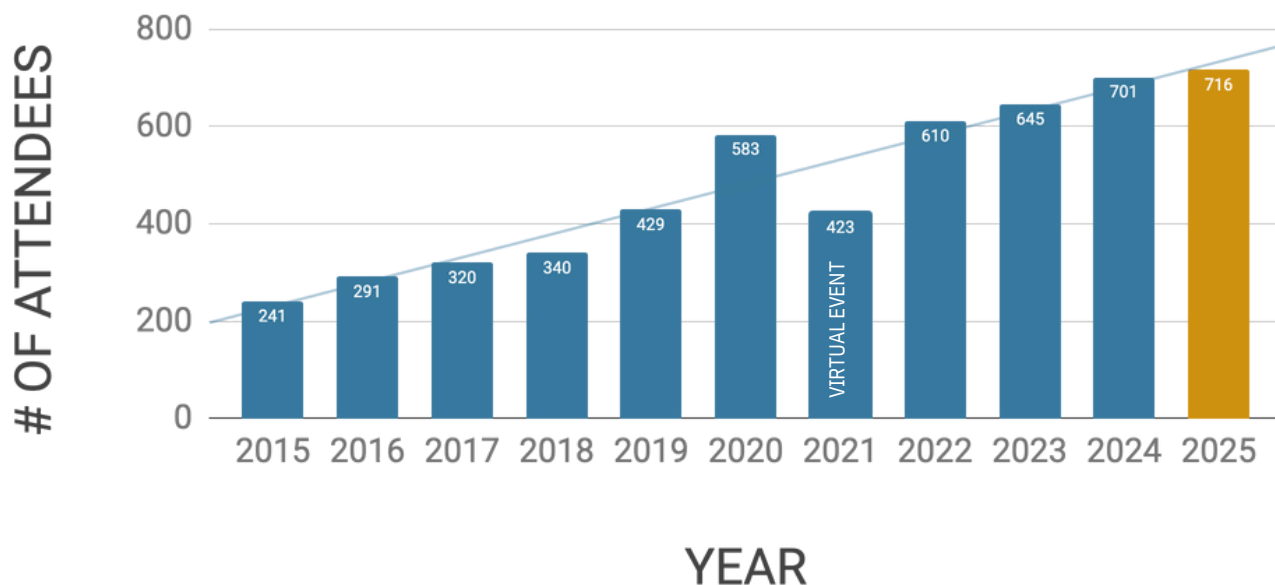


Mary Powell
Green Mountain Power



GROWING AUDIENCE

Our annual Renewable Energy Summit is the premier industry event in Wisconsin. And like the clean energy industry itself, it is growing!



PAST ATTENDEES

Companies, organizations, and government entities represented at Summits include:

350 Wisconsin	Couleecap Inc.	Graybar
3Degrees	CUNA Mutual Group	Great Lakes Bioenergy Research Center
3rd Solution Airfoil Generators	Current Electric	Great Plains Institute
42 Renewables	Daisy Vewe LLC	Green County, WI
Action for the Climate Emergency	Dane County OECC	greenpenny
Advanced Ionics, Inc.	Dawes Rigging & Crane Rental	Greentech Renewables
Aietos, LLC	DCE Solar	Gundersen Health System
Alliant Energy	Dimension Renewable Energy	Gusmer Enterprises
American Transmission Co.	DNV	Gustav & Rudy Contractors
APA Solar Racking	Doral Renewables LLC	H2 Future Power, Inc
Apex Clean Energy	Drews Solar	HDR, Inc.
APTIM	Driftless Area Land Conservancy	Healthy Climate Wisconsin
Arch Solar	Eagle Point Solar	HellermannTyton
Associated Builders and Contractors	ECA Solar	HGA
Atwell, LLC	ECMS, Inc.	Ho-Chunk Nation
AZZO	EcoBalance Technologies	Hoffman Manufacturing Corp
Baker Tilly US	EDF Renewables	Hoffman Planning, Design, Construction
Bartelt Grob, S.C.	EDP Renewables	Holy Cross Energy
Bloomberg Green	Eland Electric	Holy Wisdom Monastery
BlueGreen Alliance	Electrification Coalition	Hope Community Capital
BMO Commercial Bank	Elevate Energy	Hunger Task Force
Broadwind Heavy Fabrications Inc.	Elkhorn Area School District	Husch Blackwell
Burns & McDonnell	Emmons & Olivier Resources (EOR)	InClima
CALSTART	Endries Solar and Electric	Ingeteam
Cannon Valley Graziers	Energize, LLC	Innov8tec Inc
Capstone National Partners	ENGIE North America	InterCon Construction
Carlson Electric	Enphase Energy	Interstate Tree Land Clearing Company
Cedar Corporation	EnTech Solutions	Invenergy
Center for Land Use Education	Environmental Law & Policy Center	J.H. Findorff & Son, Inc.
CREATE	Environmental Protection Agency	JC Legal Resources Center, INS
Chads Design Build	Ethos Green Power	JCG Land Services
Cheq Bay Renewables	Ever-Green Energy	Jetpack Engineering
Citizens Utility Board of Wisconsin	Faith Technologies Inc	Kapur & Associates
Citizens' Climate Lobby	Fennessy and Associates, LLC	Kentucky Solar Energy Society
City of Fitchburg	First Consulting	Keyes & Fox LLP
City of La Crosse	Fleet Cycles	KL Engineering
City of Madison	Focus on Energy	Land and Liberty Coalition
City of Middleton	Foley & Lardner	Lands' End
City of Sun Prairie	Forward Together WI	LandSolutions
Clarke Energy USA, Inc.	Frattalone Companies, Inc.	Leeward Renewable Energy
Clean Energy for America	FTI Consulting	Legacy Solar Co-op
Clean Grid Alliance	Full Spectrum Solar	Local 139
Clean Wisconsin	G.O. Loop	LONGi Solar Technology
CLEAResult	GEI Consultants, Inc.	MAC Contractors
Conservative Energy Network	Glow Solar	Madison Area Technical College
Convergence Energy, LLC	Godfrey & Kahn	Madison Gas and Electric
Couillard Solar Foundation	Good Steward Consulting	Madison Manual Medicine



2026 RENEW WISCONSIN SUMMIT

Resilience by Design: Building Strength and Stability

THURSDAY, FEBRUARY 5, 2026 • MADISON, WI



Madison Metropolitan School District
Madison Solar Consulting
Madison West HS
Manhard Consulting
Mashuda Contractors
McCauley Lyman LLC
McKinstry
Menominee Indian Tribe of Wisconsin
Merjent
Meyer Burger
Michael, Best and Friedrich LLP
Midland States Bank
Midwest Heating & Cooling
Midwest Renewable Energy Association
Midwest Solar Power
Milwaukee School of Engineering
Mueller Communications
muGrid Analytics
MyPath
National Grid Renewables
National Renewable Energy Laboratory
New Energy Equity
NextEra Energy Resources
Nexus Solutions
Norman Bair Consulting
Northeast Wisconsin Technical College
Northwind Solar
Oconomowoc Realty
OneEnergy Renewables
Oneida Nation
Organization of MISO States
Oris Energy
PACE Wisconsin
Palmyra-Eagle Area School District
Pattern Energy
Payne & Dolan
Pieper Electric
Pines Bach LLP
Power Solutions
Power System Engineering
Powering Up Inc.
Powershare
PRC Wind
Premise, Inc.
Public Service Commission of Wisconsin
Q Cells
Quercus Land Stewardship Services
Quest Civil Engineers

Ranger Power
Rapid Improvement Associates, LLC
REC Group
RenUSA
Reynolds Transfer
River Falls Municipal Utilities
Rocky Mountain Institute
Ruekert & Mielke
RWE Clean Energy
Sambatek, Inc.
Samsung Renewable Energy
Sargent & Lundy
Savion, LLC
SC Johnson
Scott Madden Management Consultants
SET Engineering, LLC
Sheboygan Senior Community, Inc
Shive-Hattery
Slipstream
Sol Energy Solar
SolAg
Solar Bear
Solar Connection, Inc.
Solar Energy Industries Association
Solar4America Technology, Inc.
SolarEdge
SolarShare Wisconsin Cooperative
SolarStone Partners
SolEnergy
Southwest Wisconsin Technical College
Stantec Consulting
Steigerwaldt Land Services
Strategic Economic Research, LLC
SunModo Corp.
Sunny Side Development
SunPeak
Sunrise Energy Ventures, LLC
SunShare
SunVest Solar, LLC
Sustain Dane
Terracon Consultants, Inc.
Tetra Tech
The Boldt Company
The Boor Group
The Walbec Group
Third Power Solutions
TL Electric
Train Skills Management, LLC

Trane Technologies
TRC Companies
Trillium Construction
U.S. Green Building Council
Union of Concerned Scientists
UNIRAC, Inc.
UnitedHealth Group
UW - Madison
UW - Oshkosh
UW - Platteville
UW - Stevens Point - KEEP
UW Health
Vermont Energy Investment Corporation
Vernon County Energy District
Village of McFarland
Vote Solar
Walmart Inc
Water Furnace Intl
WEC Energy Group
Werner Electric Supply
WES Engineering Inc
West CAP
Westphal & Company
Westwood Professional Services
WI School Bus Association
WI State Assembly
WIDRC
WI Academy of Sciences, Arts & Letters
WI Clean Cities
WI Conservation Voters
WI Conservative Energy Forum
WI Economic Development Corporation
WI Energy Institute
WI Environmental Initiative
WI Farmers Union
WI Geothermal Association
WI Health Professionals for Climate
WI Local Government Climate Coalition
WI Office of Energy Innovation
WI Office of Sustainability
WI Public Utility Institute
WI Rapids Parks & Recreation
WI State Assembly
WI Sustainable Business Council
WPPI Energy
Xcel Energy
Zenith Tech, Inc.
Zero6 Energy

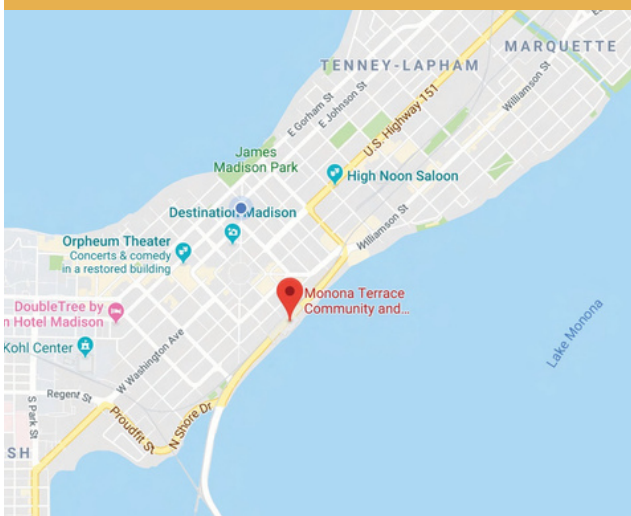
PREMIER LOCATION

Monona Terrace is a convention center situated on Lake Monona in Madison, WI. It's two blocks from the State Capitol and streets full of shops and restaurants. There are nearly one thousand hotel rooms within walking distance of Monona Terrace, including 240 rooms at the adjacent Hilton Madison Monona Terrace. The Hilton features direct access to Monona Terrace in an enclosed, climate-controlled skywalk.

MONONA TERRACE



MAP



MADISON, WI





SUMMIT SPONSORSHIP

The Renewable Energy Summit attracts professionals, policymakers, business owners, educators, students, and advocates who would like to see more clean renewable energy in Wisconsin. Bolster your organization's reputation as a supporter of renewable energy through sponsorship of the RENEW Summit. Sponsorship of this event is a great opportunity to make a real difference for renewable energy in Wisconsin.



2026 RENEW WISCONSIN SUMMIT

Resilience by Design: Building Strength and Stability

THURSDAY, FEBRUARY 5, 2026 • MADISON, WI

SUMMIT PRESENTER • \$12,500



SPONSORSHIP BENEFITS

- Event will be labeled as “RENEW Summit Presented by Your Company”
- Name and logo featured on name tags
- 5-minute address to conference attendees (plenary audience)
- Logo featured on the event app landing page of selected plenary or breakout session
- Logo featured in event app slideshow
- Sponsorship acknowledgment in the opening and closing remarks of the Summit
- Digital ad in lobby slideshow
- Double-size table/exhibit display space in Grand Terrace
- Company acknowledgment in press releases, social media, event app, and lobby slideshow
- 10 complimentary registrations

PREVIOUS PRESENTING SPONSORS



**2026 RENEW WISCONSIN SUMMIT***Resilience by Design: Building Strength and Stability*

THURSDAY, FEBRUARY 5, 2026 • MADISON, WI

SUMMIT PARTNER • \$10,000

SPONSORSHIP BENEFITS

- 5-minute address to conference attendees (breakout session)
- Logo featured on the event app landing page of selected plenary or breakout session
- Logo featured in event app slideshow
- Sponsorship acknowledgment in the opening and closing remarks of the Summit
- Digital ad in lobby slideshow
- Table/exhibit display space in Grand Terrace
- Company acknowledgment in press releases, social media, event app, and lobby slideshow
- 7 complimentary registrations

SUMMIT LEADER • \$7,500

SPONSORSHIP BENEFITS

- Logo featured in event app slideshow
- Sponsorship acknowledgment in the opening and closing remarks of the Summit
- Digital ad in lobby slideshow
- Table/exhibit display space in Grand Terrace
- Company acknowledgment in press releases, social media, event app, and lobby slideshow
- 5 complimentary registrations

SUMMIT CHAMPION • \$5,000

SPONSORSHIP BENEFITS

- Sponsorship acknowledgment in the opening and closing remarks of the Summit
- Digital ad in lobby slideshow
- Table/exhibit display space in Hall of Ideas
- Company acknowledgment in press releases, social media, event app, and lobby slideshow
- 4 complimentary registrations



2026 RENEW WISCONSIN SUMMIT

Resilience by Design: Building Strength and Stability

THURSDAY, FEBRUARY 5, 2026 • MADISON, WI

SUMMIT ADVOCATE • \$2,500

SPONSORSHIP BENEFITS

- Digital ad in lobby slideshow
- Table/exhibit display space in Hall of Ideas
- Company acknowledgment in press releases, social media, event app, and lobby slideshow
- 3 complimentary registrations

SUMMIT SUPPORTER • \$1,250

SPONSORSHIP BENEFITS

- Table/exhibit display space in Hall of Ideas
- Company acknowledgment in press releases, social media, event app, and lobby slideshow
- 2 complimentary registrations

SUMMIT CONTRIBUTOR • \$750

SPONSORSHIP BENEFITS

- Company acknowledgment in press releases, social media, event app, and lobby slideshow
- 2 complimentary registrations





2026 RENEW WISCONSIN SUMMIT

Resilience by Design: Building Strength and Stability

THURSDAY, FEBRUARY 5, 2026 • MADISON, WI

SPONSORSHIP ADD-ONS

PRE-SUMMIT RECEPTION SPONSOR • \$5,000

- Opportunity to address reception attendees
- Logo featured on reception signage

BREAKFAST/COFFEE SPONSOR • \$5,000

- Logo featured on breakfast buffet signage in Monona Terrace and Hall of Ideas

LUNCH SPONSOR • \$5,000

- Logo featured on lunch/desert buffet signage in Monona Terrace and Hall of Ideas

POST-SUMMIT SOCIAL HOUR SPONSOR • \$5,000

- Logo featured on social hour bar signage in Monona Terrace

SCHOLARSHIP SPONSOR • \$1,000

- Scholarships include registration and accommodations for up-and-coming clean energy professionals.



**2026 RENEW WISCONSIN SUMMIT***Resilience by Design: Building Strength and Stability*

THURSDAY, FEBRUARY 5, 2026 • MADISON, WI

EXHIBITOR INFORMATION

Vendor spaces are available on a first-come, first-served basis and will be assigned no later than two weeks before the event. To secure your booth, please contact Kim Bauer at kimberly@renewwisconsin.org by January 9, 2025. Reservations will be prioritized in the order they are received, so early booking is encouraged.

LINENS

RENEW Wisconsin is pleased to cover the cost of linens for our vendors. However, linens must be reserved in advance. To request linens, please notify Kim Bauer at kimberly@renewwisconsin.org by January 9, 2025.

ELECTRICITY

Please note that electrical hookups are not included in your booth space. If you require power, you must order and pay for it directly through Monona Terrace. Be aware that an electrical inventory will be conducted, and you will be charged if your booth is found using electricity. Plugging into an outlet is considered an order and will incur a fee.

INTERNET

Monona Terrace provides both wired and wireless Internet access. To arrange a hard-wired connection, please select "High Speed Internet Connection" on the Monona Terrace order form. High-speed wireless Internet access can only be purchased on-site at Monona Terrace for \$10.00 per day, per device, using a credit card (Visa, MasterCard, American Express, or Discover). Additional services and the order form can be found here: mononaterrace.com/meetings-conventions/services.



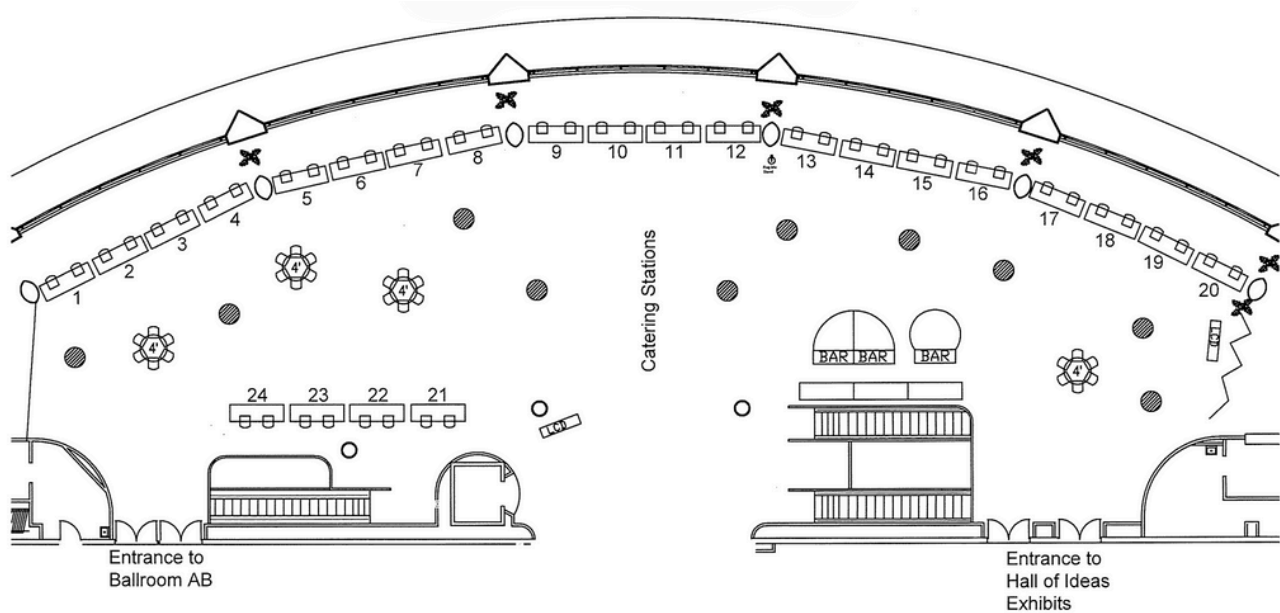


2026 RENEW WISCONSIN SUMMIT

Resilience by Design: Building Strength and Stability

THURSDAY, FEBRUARY 5, 2026 • MADISON, WI

PRESENTING / PARTNER / LEADER SPONSOR VENDOR AREA GRAND TERRACE



Vendor space will be available on a first-come, first-served basis, and assignments will be made at least two weeks before the Summit. Contact Kim Bauer (kim@renewwisconsin.org) to reserve your booth. Exhibitor reservations will be honored based on the order reserved.

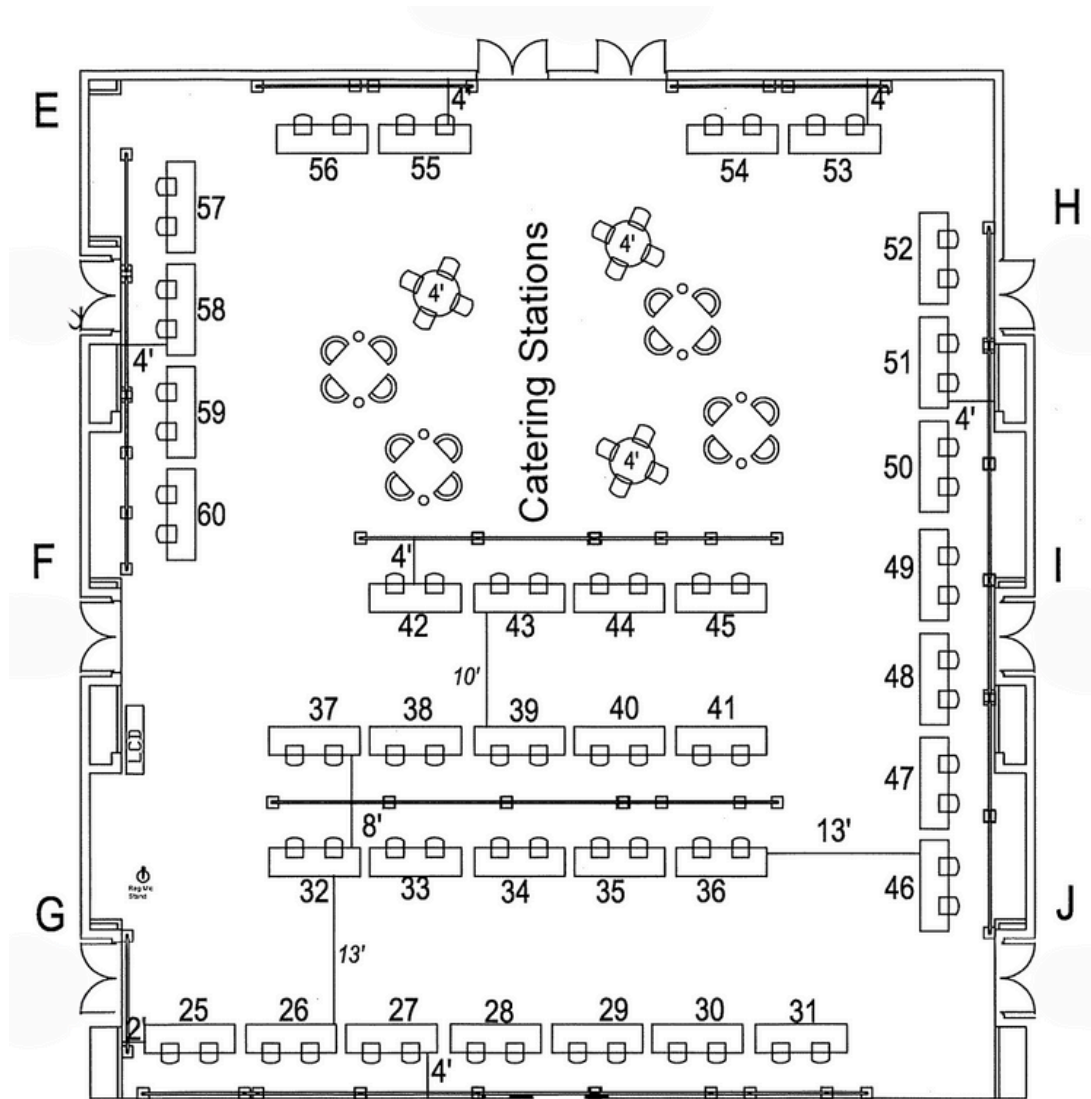


2026 RENEW WISCONSIN SUMMIT

Resilience by Design: Building Strength and Stability

THURSDAY, FEBRUARY 5, 2026 • MADISON, WI

CHAMPION / ADVOCATE / SUPPORTER SPONSOR VENDOR AREA HALL OF IDEAS



Vendor space will be available on a first-come, first-served basis, and assignments will be made at least two weeks before the Summit. Contact Kim Bauer (kim@renewwisconsin.org) to reserve your booth. Exhibitor reservations will be honored based on the order reserved.



2026 RENEW WISCONSIN SUMMIT

Resilience by Design: Building Strength and Stability

THURSDAY, FEBRUARY 5, 2026 • MADISON, WI

RENEWABLE ENERGY SUMMIT • FEBRUARY 5, 2026

SPONSOR AGREEMENT

RENEW Wisconsin agrees to grant the sponsor the benefits outlined in this sponsorship packet per the sponsorship level. For RENEW to honor its commitments, sponsors must agree to submit organization assets by the designated deadlines. Specifications for ads and logos will be provided upon indication of sponsorship intentions.

DEADLINES

- **January 9, 2026:** Commitment to use exhibitor space (Presenting, Partner, Leader, Champion, Advocate) is available on a first-come, first-served basis.
- **January 9, 2026:** Logos for the lobby slideshow
- **January 9, 2026:** Sponsorship commitment for inclusion in press and social media
- **January 9, 2026:** Digital ads for the lobby slideshow (Presenting, Partner, Leader, Champion)





2026 RENEW WISCONSIN SUMMIT

Resilience by Design: Building Strength and Stability

THURSDAY, FEBRUARY 5, 2026 • MADISON, WI

SPONSOR AGREEMENT

SPONSORSHIP LEVEL

- ☐ \$12,500 - PRESENTING SPONSOR
- ☐ \$10,000 - SUMMIT PARTNER
- ☐ \$7,500 - SUMMIT LEADER
- ☐ \$5,000 - SUMMIT CHAMPION
- ☐ \$2,500 - SUMMIT ADVOCATE
- ☐ \$1,250 - SUMMIT SUPPORTER
- ☐ \$750 - SUMMIT CONTRIBUTOR

ADD ONS (based on availability)

- ☐ \$5,000 - PRE-SUMMIT RECEPTION SPONSOR
- ☐ \$5,000 - BREAKFAST SPONSOR
- ☐ \$5,000 - LUNCH/DESSERT SPONSOR
- ☐ \$5,000 - POST-SUMMIT SOCIAL HOUR SPONSOR
- ☐ \$1,000 - SCHOLARSHIP SPONSOR

PAYMENT METHOD

- ☐ Pay Online renewwisconsin.org/renewable-energy-summit/sponsorship
- ☐ Email invoice



Sponsor Name:

Address:

Phone:

Email:



214 North Hamilton Street, Suite 300
Madison, WI 53703
608.255.4044 • ismaeel@renewwisconsin.org
www.renewwisconsin.org/renewable-energy-summit

Signature:

Date:

Name:

Position:

*With the exception of the Presenting Sponsorship and add ons, nonprofits receive a 50% discount on sponsorship.



2026 RENEW WISCONSIN SUMMIT

Resilience by Design: Building Strength and Stability

THURSDAY, FEBRUARY 5, 2026 • MADISON, WI

SPONSOR BENEFITS

	\$12,500 PRESENTER (LIMIT 3)	\$10,000 PARTNER	\$7,500 LEADER	\$5,000 CHAMPION	\$2,500 ADVOCATE	\$1,250 SUPPORTER	\$750 CONTRIBUTOR
Event will be labeled as "RENEW Summit Presented by Your Company"	●						
Name and logo featured on name tags	●						
Brief address to conference attendees	plenary address	breakout session					
Logo featured on homepage of designated plenary or breakout session page of event app	●	●					
Logo featured in event app slideshow	●	●	●				
Sponsorship acknowledgement in opening and closing remarks of Summit	●	●	●	●			
Digital ad in lobby slideshow	●	●	●	●	●		
Table/exhibit display space	2 Tables Grand Terrace	Grand Terrace	Hall of Ideas	Hall of Ideas	Hall of Ideas	Hall of Ideas	
Company acknowledgement in press release, social media, event app, and lobby slideshow	●	●	●	●	●	●	●
Complimentary registrations	10	7	5	4	3	2	2

*With the exception of the Presenting Sponsorship and add ons, nonprofits receive a 50% discount on sponsorship.



2026 RENEW WISCONSIN SUMMIT

Resilience by Design: Building Strength and Stability

THURSDAY, FEBRUARY 5, 2026 • MADISON, WI

SPONSOR AGREEMENT

SPONSORSHIP LEVEL

- ☐ \$12,500 - PRESENTING SPONSOR
- ☐ \$10,000 - SUMMIT PARTNER
- ☐ \$7,500 - SUMMIT LEADER
- ☐ \$5,000 - SUMMIT CHAMPION
- ☐ \$2,500 - SUMMIT ADVOCATE
- ☐ \$1,250 - SUMMIT SUPPORTER
- ☐ \$750 - SUMMIT CONTRIBUTOR

ADD ONS (based on availability)

- ☐ \$5,000 - PRE-SUMMIT RECEPTION SPONSOR
- ☐ \$5,000 - BREAKFAST SPONSOR
- ☐ \$5,000 - LUNCH/DESSERT SPONSOR
- ☐ \$5,000 - POST-SUMMIT SOCIAL HOUR SPONSOR
- ☐ \$1,000 - SCHOLARSHIP SPONSOR

PAYMENT METHOD

- ☐ Pay Online renewwisconsin.org/renewable-energy-summit/sponsorship
- ☐ Email invoice



Sponsor Name:

Address:

Phone:

Email:



214 North Hamilton Street, Suite 300
Madison, WI 53703
608.255.4044 • ismaeel@renewwisconsin.org
www.renewwisconsin.org/renewable-energy-summit

Signature:

Date:

Name:

Position:



RENEW WISCONSIN ENERGY SUMMIT SPONSORSHIP



214 North Hamilton Street, Suite 300
Madison, WI 53703

608.255.4044 • ismaeel@renewwisconsin.org

www.renewwisconsin.org/renewable-energy-summit